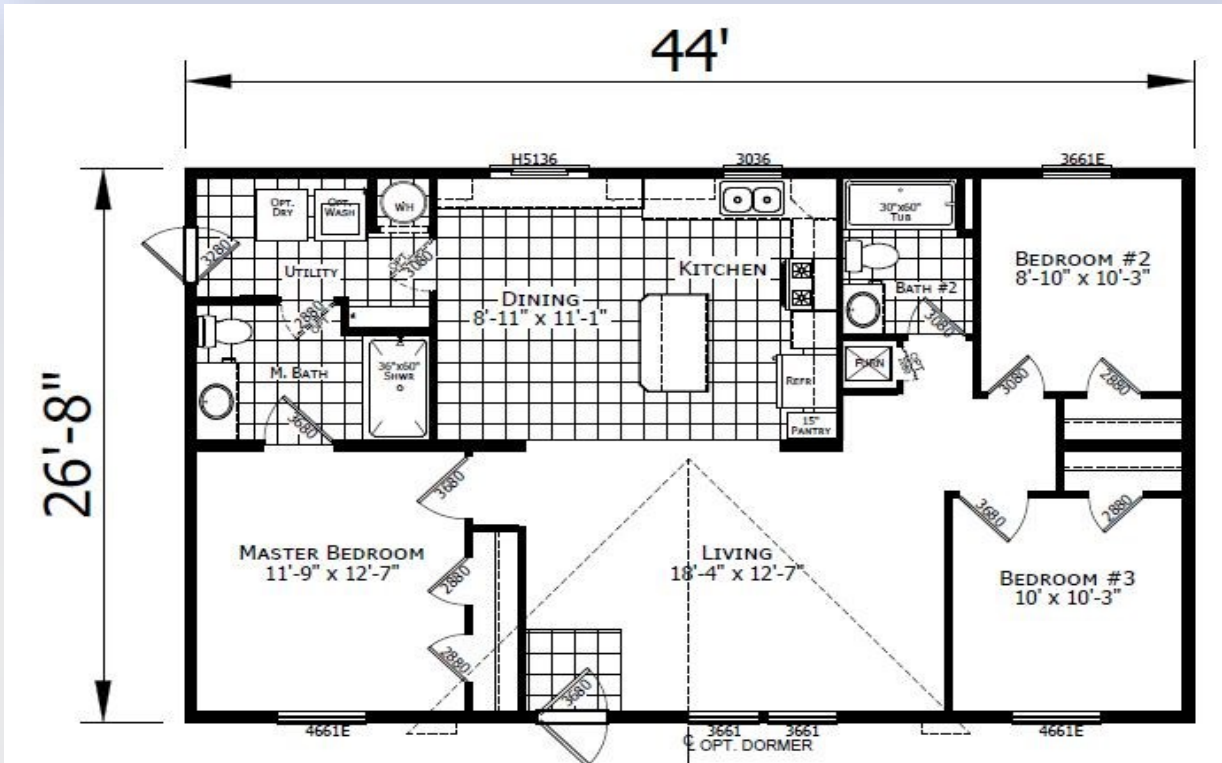


REDMAN 24402



SCAN FOR MORE
PICS, PLANS, AND
VIRTUAL TOURS

*Model Pricing Subject to Change Without
Notice Due to Market Volatility

\$139,999 AS SHOWN

\$139,999



ShowcaseHomesOfMaine.com

"Custom Modular Home Builder"

OPTIONS

BASE PRICE:

\$130,563

Options:

Maine Package: 40# Roof (16" O.C.), Ice Guard, Furnace Stack Extension, Furnace Safety Switch, Well Circuit Conduit, Smoke/CO Detectors, OSB Sheathing, Wind Wrap, Pier Savers	\$2,716
Champion 7 Year Limited Warranty: Covers major appliances, central A/C, central heating, plumbing, electrical, and structural (see sales consultant for details)	STD
Stainless & Black Appliance Package (Fridge, Dishwasher, Microwave, Gas Range) <small>*Please note that appliances may not be available at time of order due to widespread shortages; see your sales rep for details</small>	\$650
Black Interior Package	\$695
Crescent Edge Countertops in Kitchen and Bathrooms	\$530
24' Reverse Gable Dormer	\$880
Upgrade Molding to 2.75" Throughout	\$355
R19 Wall Insulation (2"x6" Walls)	STD
R22 Floor Insulation	\$440
R30 Ceiling Insulation	\$220
Perimeter Heat	\$405
40 Gallon Elec Water Heater (30 Gallon STD)	\$70
Exterior Water Faucet	\$75
Water Shut-Off Valves at Each Fixture	\$70
Extra Lino @ Foyer	\$50
Upgrade Utility Room Door to 9-Lite	STD
Storm Doors @ Front Door and Utility Room	\$930
Furnace Door	\$115
Extra Door - Master Bath to Utility Room	\$110
(2) Cable TV Jacks	\$90
(4) LED Recess Can Lights @ Kitchen	\$120
Cage Decorative Light @ Dining Room	\$195
Ceiling Fan with Light Kit @ Living Room	\$230
Extra Exterior Light @ Both Doors	\$100
(2) Pendant Lights @ Kitchen Island	\$200
LED Can Lights @ All Bedrooms	\$120
Porcelain Sinks @ Both Bathrooms	STD
Surface Mount Medicine Cab Over Master Bath Toilet	\$70
Options total	\$9,436

SELLING PRICE

\$139,999

Wind Zone II Add \$3,000



ShowcaseHomesOfMaine.com
"Custom Modular Home Builder"

www.showcasehomesofmaine.com