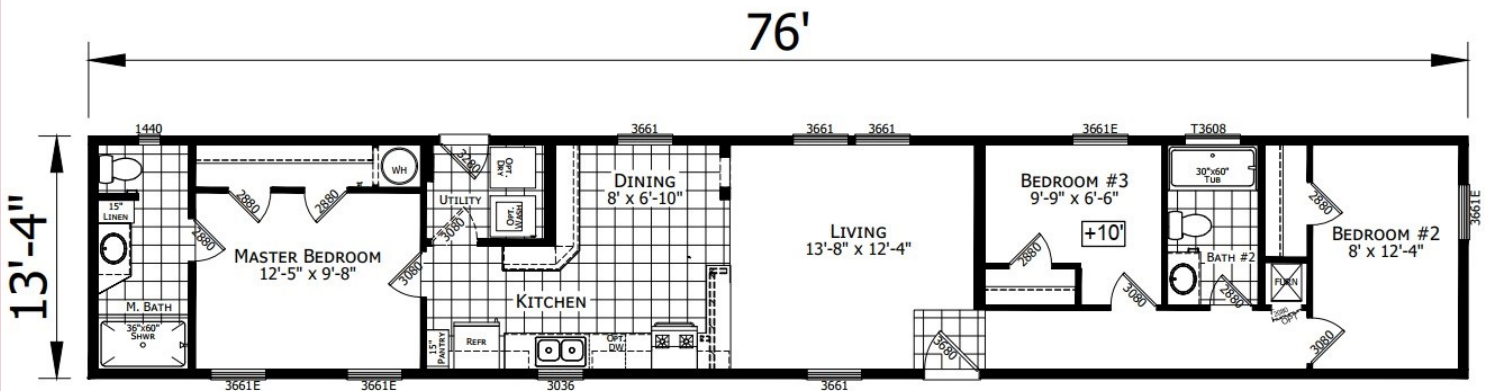


# REDMAN 46627 76' 3 BR

SN 14290



MODEL 122-07-F-46627

3 BEDROOM, 2 BATH  
NOMINAL SIZE: 14'-0" X 80'-0"  
ACTUAL SIZE: 13'-4" X 76'-0"  
TOTAL AREA: 1013 SQ. FT.

**\*Model Pricing Subject to Change Without Notice Due to Market Volatility**

**\$107,440 AS SHOWN**



**\$107,440**



**ShowcaseHomesOfMaine.com**

## "Custom Modular Home Builder"

# OPTIONS

## BASE PRICE

**\$99,227.00**

### Options:

**Maine Package:** 40# Roof (16" O.C.), 7/16" OSB Sheathing, Ice Guard, Pier Savers, Furnace Stack Extension, Furnace Safety Switch, Well Pump Conduit, Combo Smoke/CO2 Detectors

\$2,440.00

Champion 7 Year Limited Warranty: Covers major appliances, central A/C, central heating, plumbing, electrical, and structural (see sales consultant for details)

STD

Upgrade Molding to 2.75" Throughout

\$265.00

R22 Floor Insulation

\$380.00

R19 Wall Insulation (2"x6" Walls)

STD

R30 Ceiling Insulation

\$228.00

High Efficiency Gas Furnace

STD

Perimeter Heat

\$250.00

40 Gallon Elec Water Heater

\$70.00

Exterior Water Faucet

\$75.00

Water Shut-Off Valves Throughout

\$70.00

Lino Throughout

\$430.00

Stainless Kitchen Appliance Package (Fridge, D/W, Range, Microwave) \*Please note appliances may not be available at time of order due to widespread shortages; see your sales rep for details

\$650.00

9 Lite Door @ Rear Door

STD

Storm Doors (Installed)

\$730.00

Furnace Door

\$115.00

Extra 2 Panel Door @ Utility Rm

\$110.00

Transom Window @ Hall Bath

\$135.00

(2) Cable TV Jacks w/ Central Drop

\$90.00

(4) LED Recess Cans @ Kitchen Ceiling

\$120.00

Chandelier @ Dining Room

\$135.00

Ceiling Fan/Light @ Living Room

\$230.00

Ceiling Fan/Light @ Master BR

\$230.00

LED Can Lights @ Bedroom 2 & Bedroom 3

\$60.00

60" Shower w/ Glass Door @ Master Bath

\$355.00

Deepwell Stainless Steel Kitchen Sink

\$105.00

Porcelain Vanity Sinks

STD

Single Lever Faucets Throughout

\$70.00

Cabinet Over Fridge

\$150.00

Wood Cabinet Doors with Wood Stiles Throughout

\$720.00

### Options total

**\$8,213.00**

### Base plus Options

**\$107,440.00**

**\*\*Windzone II add \$2,000**



**[www.showcasehomesofmaine.com](http://www.showcasehomesofmaine.com)**