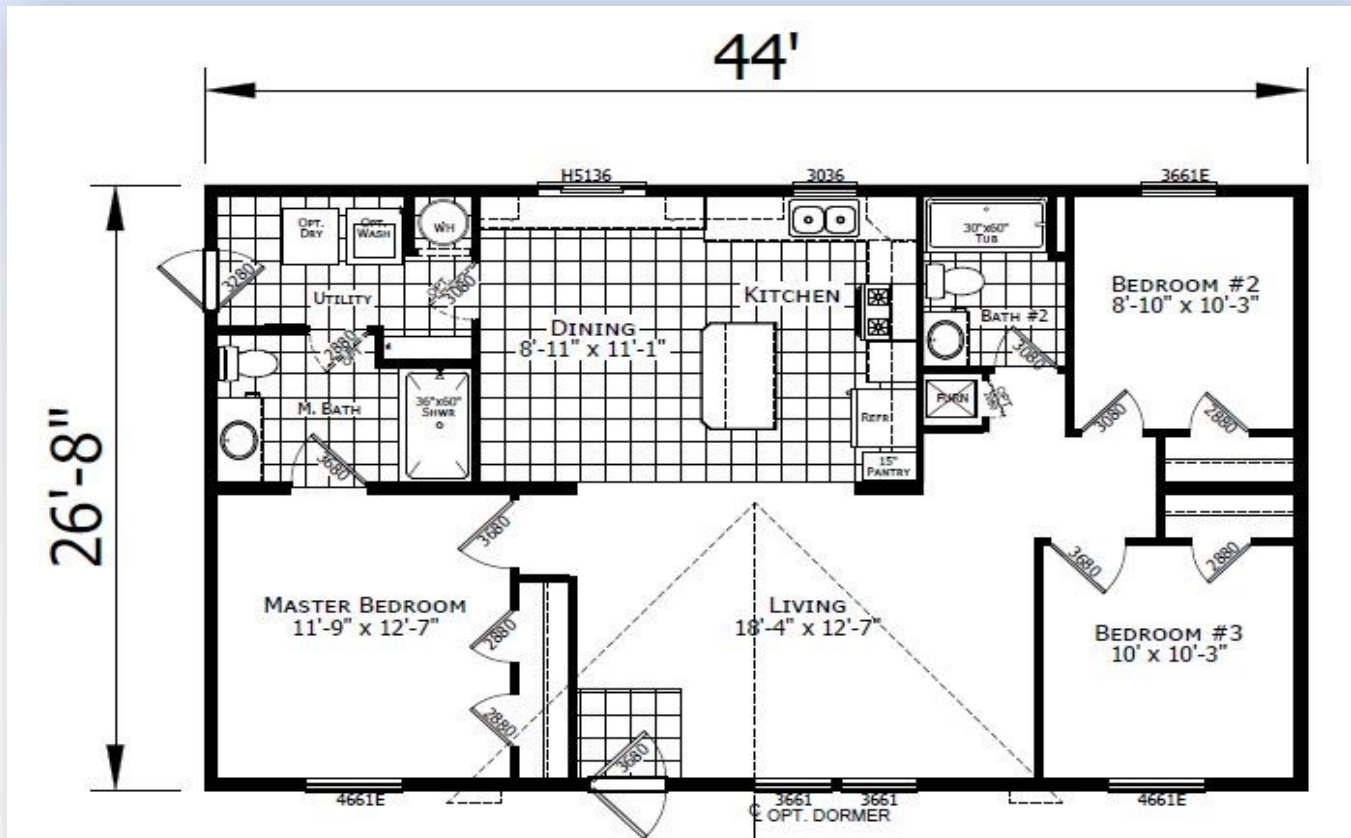


# REDMAN 24402



\*Model Pricing Subject to Change Without  
Notice Due to Market Volatility

**\$134,066 AS SHOWN**

**\$134,066**



**ShowcaseHomesOfMaine.com**

**"Custom Modular Home Builder"**

# OPTIONS

**BASE PRICE:**

**\$125,615**

**Options:**

Maine Package: 40# Roof (16" O.C.), Ice Guard, Furnace Stack Extension, Furnace Safety Switch, Well Circuit Conduit, Smoke/CO Detectors, OSB Sheathing, Wind Wrap, Pier Savers	\$2,746
Champion 7 Year Limited Warranty: Covers major appliances, central A/C, central heating, plumbing, electrical, and structural (see sales consultant for details)	STD
Stainless & Black Appliance Package (Fridge, Dishwasher, Microwave, Gas Range) <small>*Please note that appliances may not be available at time of order due to widespread shortages; see your sales rep for details</small>	\$650
Crescent Edge Countertops in Kitchen and Bathrooms	\$530
24' Reverse Gable Dormer	\$880
Upgrade Molding to 2.75" Throughout	\$355
R19 Wall Insulation (2"x6" Walls)	STD
R22 Floor Insulation	\$440
R30 Ceiling Insulation	\$220
Perimeter Heat	\$405
40 Gallon Elec Water Heater (30 Gallon STD)	\$70
Exterior Water Faucet	\$75
Water Shut-Off Valves at Each Fixture	\$70
Extra Lino @ Foyer	\$50
Upgrade Utility Room Door to 9-Lite	STD
Storm Doors @ Front Door and Utility Room	\$730
Furnace Door	\$115
Extra Door - Master Bath to Utility Room	\$110
(2) Cable TV Jacks	\$90
(4) LED Recess Can Lights @ Kitchen	\$120
Chandelier @ Dining Room	\$135
Ceiling Fan with Light Kit @ Living Room	\$230
(2) Pendant Lights @ Kitchen Island	\$120
LED Can Lights @ All Bedrooms	\$120
Porcelain Sinks @ Both Bathrooms	STD
Single Lever Bathroom Faucets	\$70
Tub Overdrape	\$50
Surface Mount Medicine Cab Over Master Bath Toilet	\$70
Options total	<u>\$8,451</u>

**SELLING PRICE**

**\$134,066**

\*\*\*Wind Zone II Add \$3,000\*\*\*



[www.showcasehomesofmaine.com](http://www.showcasehomesofmaine.com)