

CBS DUPLEX



*Model Pricing Subject to Change Without Notice Due to Market Volatility

*Decks Are Additional Cost

*Two Duplexes Shown in Image Below

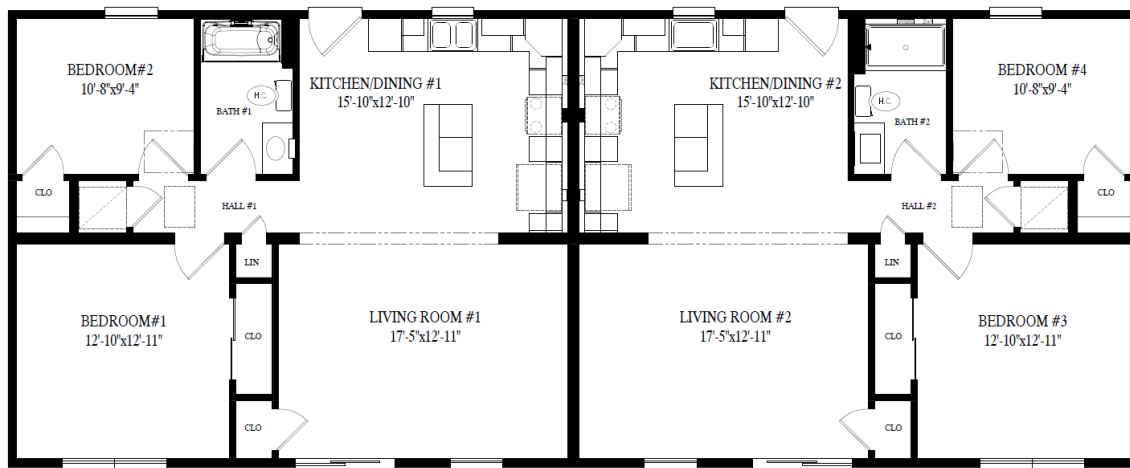
\$336,893 AS SHOWN

Starting Price \$280,500 1,870SQ FT.



ShowcaseHomesOfMaine.com

"Custom Modular Home Builder"



Base:

Raise Wall Openings to 90" - Kitchen to Living Room
 Fire Stop Wall for Attic (Code Requirement)
 Ceiling Lights Installed Over Fan/Light Prep @ Bedrooms and Living Room (Nickel Finish)
 Ceiling Fan/Light Prep (Box, Blocking, Wiring, Switches) @ All Bedrooms and Living Rooms
 Additional Thermostat Wire
 (8) Recess Can Lights (4 Per Unit)
 (2) Additional Hallway Surface Mount Lights (1 Per Unit)
 (2) LED Recess Lights @ Laundry Area (1 Per Unit)
 (2) LED Recess Lights @ Bedroom 2 & Bedroom 4 Closets
 6" Corner Posts
 Harvey Slimline Double Hung Low-E Windows w/ GBG
 Harvey 3" Lineals
 (2) Harvey Sliding Glass Doors (1 Per Unit)
 Harvey 3" Lineals @ Sliding Glass Doors
 Satin Nickel Lever Sets for Interior Doors
 Cased Opening from Living Room to Kitchen (Both Units)
 Kitchen Appliance Allowance
 Cotton White Painted Cabinets @ Kitchen
 Cotton White Painted Trash Can Pull-Out Base Cabinet
 Cotton White Painted Utility Cabinet w/ Shelf Kit
 Crescent Edge Formica Counter Tops w/ Deluxe Color
 Moen Chrome Single Lever Faucet w/ Sprayer
 Wiring and Vent Microwave (Both Units)
 Electric Range Prep 220v (Both Units)
 Plumbing Prep for Fridge Waterline (Both Units)
 Cotton White Painted Bathroom Vanity
 Elongated Bowl Toilets w/ Soft Close Lids (Both Units)
 Panasonic Bathroom Fans w/ Motion Sensors (Both Units)

\$280,500

Owner Unit Deluxe Upgrades

\$889	Bronze Lighting Package	\$30
\$1,857	Ceiling Lights Installed Over Fan/Light Prep @ Bedrooms and Living Room (Bronze Finish)	\$125
\$104	Bronze Lockset & Hinges for Exterior Door	\$41
\$470	Recessed 5 Panel Interior Doors	\$1,277
\$37	Bronze Lever Sets for Interior Doors	\$218
\$511	Crown Molding @ Kitchen, Dining Rm, Hallway, Bedrooms	\$455
\$213	Craftsman Style Trim Package w/ 5/4"x6" Header & 1"x4" Legs	\$3,866
\$147	Shaw Vinyl Plank Flooring Throughout	\$7,130
\$80	Kitchen Appliance Allowance	\$4,500
\$253	Graphite Painted Kitchen Island Cabinets	\$208
\$1,622	Basalt Painted Trash Can Pull-Out Base Cabinet	\$33
\$2,400	Basalt Painted Kitchen Cabinets	\$725
\$1,358	Basalt Painted Utility Cabinet w/ Shelf Kit	\$1,437
\$1,088	Fresh Linen Quartz Kitchen & Bath Counters w/ Eased Edge	\$4,621
\$218	White Ceramic Tile Kitchen Backsplash	\$1,524
\$456	Stainless Undermount Kitchen Sink	\$294
\$4,500	Moen Black Single Handle Faucet	\$443
\$2,407	Basalt Painted Bathroom Vanity	\$12
\$129	Rectangular Undermount Bathroom Sink	\$269
\$1,610	Moen Two Handle Bronze Bathroom Faucet	\$579
\$550	24x36 LED Lighted Bathroom Mirror	\$205
\$101	60" Ceramic Tile Shower w/ White Floor Pan & Recessed Shelf Niche	\$4,903
\$412	Moen Bronze Shower Faucet	\$377
\$696	Waterproof Can Light @ Shower	\$76
\$130	Total Owner Unit Upgrades:	\$33,348
\$97	Total Options:	\$56,393
\$228		
\$482		\$336,893