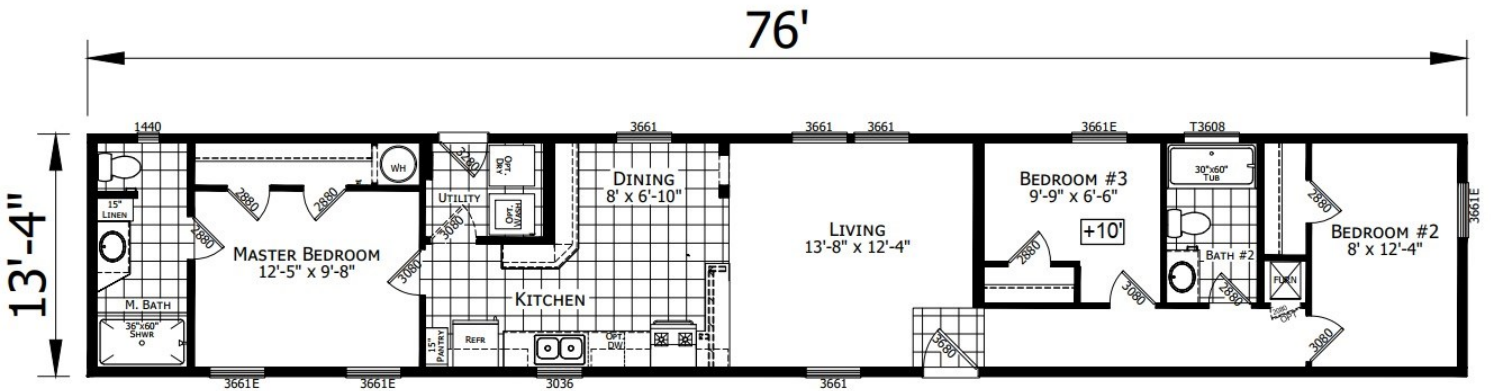


# REDMAN 46627 76' 3 BR



MODEL 122-07-F-46627

3 BEDROOM, 2 BATH  
NOMINAL SIZE: 14'-0" X 80'-0"  
ACTUAL SIZE: 13'-4" X 76'-0"  
TOTAL AREA: 1013 SQ. FT.

\*Model Pricing Subject to Change Without Notice Due to Market Volatility

**\$98,718 AS SHOWN**



**\$98,718**



**ShowcaseHomesOfMaine.com**

**"Custom Modular Home Builder"**

# OPTIONS

## BASE PRICE

**\$90,505.00**

### Options:

<b>Maine Package:</b> 40# Roof (16" O.C.), 7/16" OSB Sheathing, Ice Guard, Pier Savers, Furnace Stack Extension, Furnace Safety Switch, Well Pump Conduit, Combo Smoke/CO2 Detectors	\$2,440.00
Champion 7 Year Limited Warranty: Covers major appliances, central A/C, central heating, plumbing, electrical, and structural (see sales consultant for details)	STD
Upgrade Molding to 2.75" Throughout	\$265.00
R22 Floor Insulation	\$380.00
R19 Wall Insulation (2"x6" Walls)	STD
R30 Ceiling Insulation	\$228.00
High Efficiency Gas Furnace	STD
Perimeter Heat	\$250.00
40 Gallon Elec Water Heater	\$70.00
Exterior Water Faucet	\$75.00
Water Shut-Off Valves Throughout	\$70.00
Lino Throughout	\$430.00
Black & Stainless Kitchen Appliance Package (Fridge, D/W, Range, Microwave) *Please note appliances may not be available at time of order due to widespread shortages; see your sales rep for details	\$650.00
9 Lite Door @ Rear Door	STD
Storm Doors (Installed)	\$730.00
Furnace Door	\$115.00
Extra 2 Panel Door @ Utility Rm	\$110.00
Transom Window @ Hall Bath	\$135.00
(2) Cable TV Jacks w/ Central Drop	\$90.00
(4) LED Recess Cans @ Kitchen Ceiling	\$120.00
Chandelier @ Dining Room	\$135.00
Ceiling Fan/Light @ Living Room	\$230.00
Ceiling Fan/Light @ Master BR	\$230.00
LED Can Lights @ Bedroom 2 & Bedroom 3	\$60.00
60" Shower w/ Glass Door @ Master Bath	\$355.00
Deepwell Stainless Steel Kitchen Sink	\$105.00
Porcelain Vanity Sinks	STD
Single Lever Faucets Throughout	\$70.00
Cabinet Over Fridge	\$150.00
Wood Cabinet Doors with Wood Stiles Throughout	\$720.00

### Options total

**\$8,213.00**

### Base plus Options

**\$98,718.00**

\*\*Windzone II add \$2,000



**ShowcaseHomesOfMaine.com**  
"Custom Modular Home Builder"

[www.showcasehomesofmaine.com](http://www.showcasehomesofmaine.com)