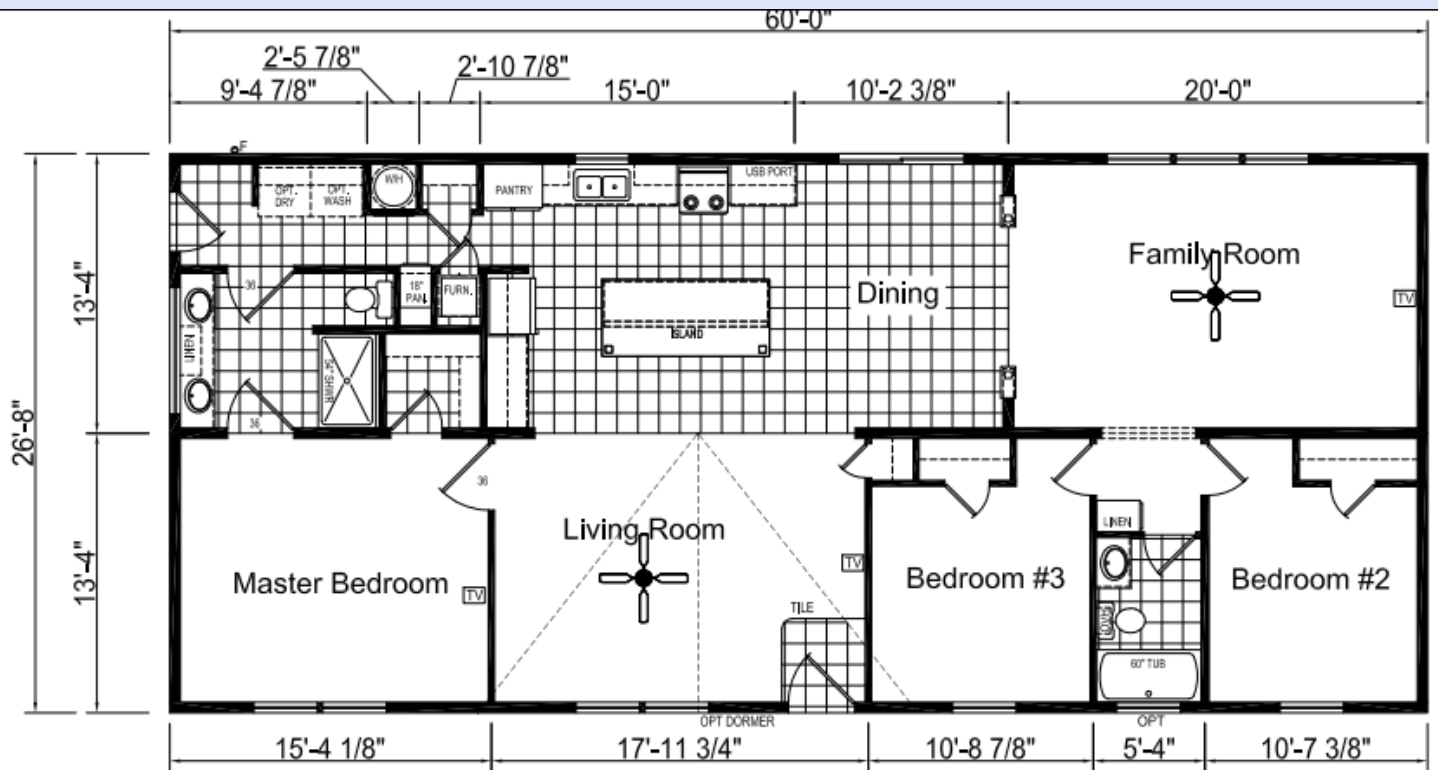


# EAGLE RIVER 64J895



\*Model Pricing Subject to Change Without Notice  
Due to Market Volatility

**\$171,777 AS SHOWN**

# \$171,777



ShowcaseHomesOfMaine.com

"Custom Modular Home Builder"

# OPTIONS

**BASE PRICE - Eagle River 64J895**

**\$157,783**

## Options:

**Maine Package:** 40LB Roof (16" O.C.), OSB Sheathing, Ice & Water Shield Entire Roof, Furnace Stack Extension, Furnace Safety Switch, Smoke/CO2 Detectors, Well Circuit Conduit, Wind Wrap

\$5,578

**Golden Eagle Package:** Standstone Color Windows, Trim, Front Door, and 9-Lite Rear Door; Deluxe Front Porch Light

\$935

White Flat Panel Cabinets & Drawer Fronts

\$233

White Deluxe Molding Throughout

\$850

Calcutta Marble HD Countertops Throughout

\$230

Glass Tile Backsplash @ Kitchen and Both Bathrooms

STD

Eyebrow Dormer @ Front Door

\$99

Deluxe Siding - Brunswick

\$900

R-22 Floor Insulation

\$399

R-19 Wall Insulation (2"x6" Walls)

STD

R-30 Floor Insulation

\$299

White Wall Mount Registers

\$50

Lino @ Foyer Entry

STD

Deluxe Stainless Steel Appliance Package: Gas Range, 22 Cubic Ft Side by Side Fridge, Dishwasher, Microwave \*Please note that appliances may not be available at time of order due to widespread shortages; see your sales rep for details

\$1,865

Installed Storm Doors @ Both Doors

\$558

Sliding Glass Door @ Dining Room

\$815

36" Door from Laundry to Master Bath

\$85

10"x72" Transom Window @ Master Bath

\$180

Transom Window @ Hall Bath

\$90

100 Amp Long Box Breaker Panel

\$60

Ceiling Fans @ Living Room and Family Room

\$196

(3) Additional Recess Can Lights @ Kitchen

\$102

(2) Pendant Lights @ Kitchen Island

STD

USB Ports Under Kitchen Cabinet

\$55

40 Gallon Electric Water Heater

STD

Water Shut-Offs @ Each Fixture

STD

Whole House Water Shut-Off

\$65

Single Lever Metal Faucets

\$150

48"x94" Kitchen Island

STD

Fluted Column Divider Wall @ Family Room

\$200

Options total

\$13,994

**SELLING PRICE**

**\$171,777**

\*\*Windzone II add \$2,500



**ShowcaseHomesOfMaine.com**

**"Custom Modular Home Builder"**

[www.showcasehomesofmaine.com](http://www.showcasehomesofmaine.com)