

CBS DUPLEX



*Model Pricing Subject to Change Without Notice Due to Market Volatility

*Decks and Dog House Entrances Are Additional Cost

*Two Duplexes Shown in Images

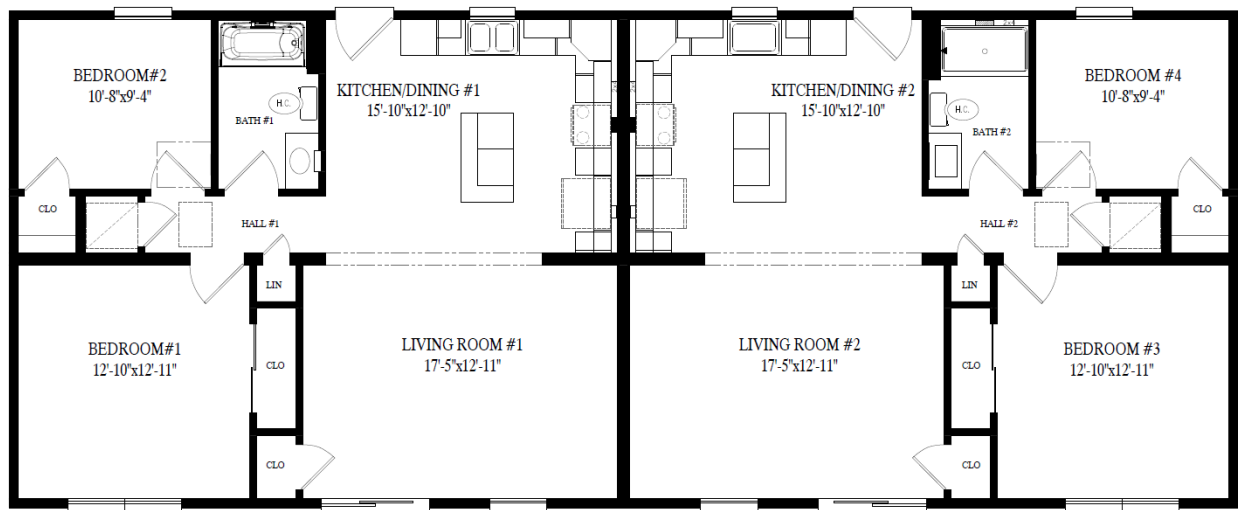
\$306,487 AS SHOWN

Starting Price \$263,600 1,870SQ FT.



ShowcaseHomesOfMaine.com

"Custom Modular Home Builder"



Base:

Raise Wall Openings to 90" - Kitchen to Living Room
 Fire Stop Wall for Attic (Code Requirement)
 Ceiling Lights Installed Over Fan/Light Prep @ Bedrooms and Living Room (Nickel Finish)
 Ceiling Fan/Light Prep (Box, Blocking, Wiring, Switches) @ All Bedrooms and Living Rooms
 Additional Thermostat Wire
 (8) Recess Can Lights (4 Per Unit)
 (2) Additional Hallway Surface Mount Lights (1 Per Unit)
 (2) LED Recess Lights @ Laundry Area (1 Per Unit)
 (2) LED Recess Lights @ Bedroom 2 & Bedroom 4
 Closets
 6" Corner Posts
 Harvey Slimline Double Hung Low-E Windows w/ GBG
 Harvey 3" Lineals
 (2) Harvey Sliding Glass Doors (1 Per Unit)
 Harvey 3" Lineals @ Sliding Glass Doors
 Satin Nickel Lever Sets for Interior Doors
 Cased Opening from Living Room to Kitchen (Both Units)
 Cotton White Painted Cabinets @ Kitchen
 Cotton White Painted Trash Can Pull-Out Base Cabinet
 Cotton White Painted Utility Cabinet w/ Shelf Kit
 Crescent Edge Formica Counter Tops w/ Deluxe Color
 Moen Chrome Single Lever Faucet w/ Sprayer
 Wiring and Vent Microwave (Both Units)
 Electric Range Prep 220v (Both Units)
 Plumbing Prep for Fridge Waterline (Both Units)
 Cotton White Painted Bathroom Vanity
 Elongated Bowl Toilets w/ Soft Close Lids (Both Units)
 Panasonic Bathroom Fans w/ Motion Sensors (Both Units)

\$263,600 Owner Unit Deluxe Upgrades

\$855	Bronze Lighting Package	\$29
\$1,785	Ceiling Lights Installed Over Fan/Light Prep @ Bedrooms and Living Room (Bronze Finish)	\$121
\$100	Bronze Lockset & Hinges for Exterior Door	\$31
	Recessed 5 Panel Interior Doors	\$1,228
\$452	Bronze Lever Sets for Interior Doors	\$175
\$36	Crown Molding @ Kitchen, Dining Rm, Hallway, Bedrooms	\$436
\$492	Craftsman Style Trim Package w/ 5/4"x6" Header & 1"x4" Legs	\$3,718
\$205	Shaw Vinyl Plank Flooring Throughout	\$5,765
\$126	Graphite Painted Kitchen Island Cabinets	\$165
\$70	Basalt Painted Trash Can Pull-Out Base Cabinet	\$45
\$244	Basalt Painted Kitchen Cabinets	\$527
\$1,560	Basalt Painted Utility Cabinet w/ Shelf Kit	\$1,381
\$2,307	Fresh Linen Quartz Kitchen & Bath Counters w/ Eased Edge	\$4,116
\$1,501	White Ceramic Tile Kitchen Backsplash	\$1,427
\$1,046	Stainless Undermount Kitchen Sink	\$213
\$246	Moen Black Single Handle Faucet	\$393
\$447	Basalt Painted Bathroom Vanity	\$12
\$1,555	Rectangular Undermount Bathroom Sink	\$224
\$124	Moen Two Handle Bronze Bathroom Faucet	\$556
\$1,547	24x36 LED Lighted Bathroom Mirror	\$197
\$531	60" Ceramic Tile Shower w/ White Floor Pan & Recessed Shelf Niche	\$4,426
\$63	Moen Bronze Shower Faucet	\$362
\$396	Waterproof Can Light @ Shower	\$73
\$670	Total Owner Unit Upgrades:	\$25,620
\$130	Total Options:	\$42,887
\$91		\$306,487
\$220		
\$468		