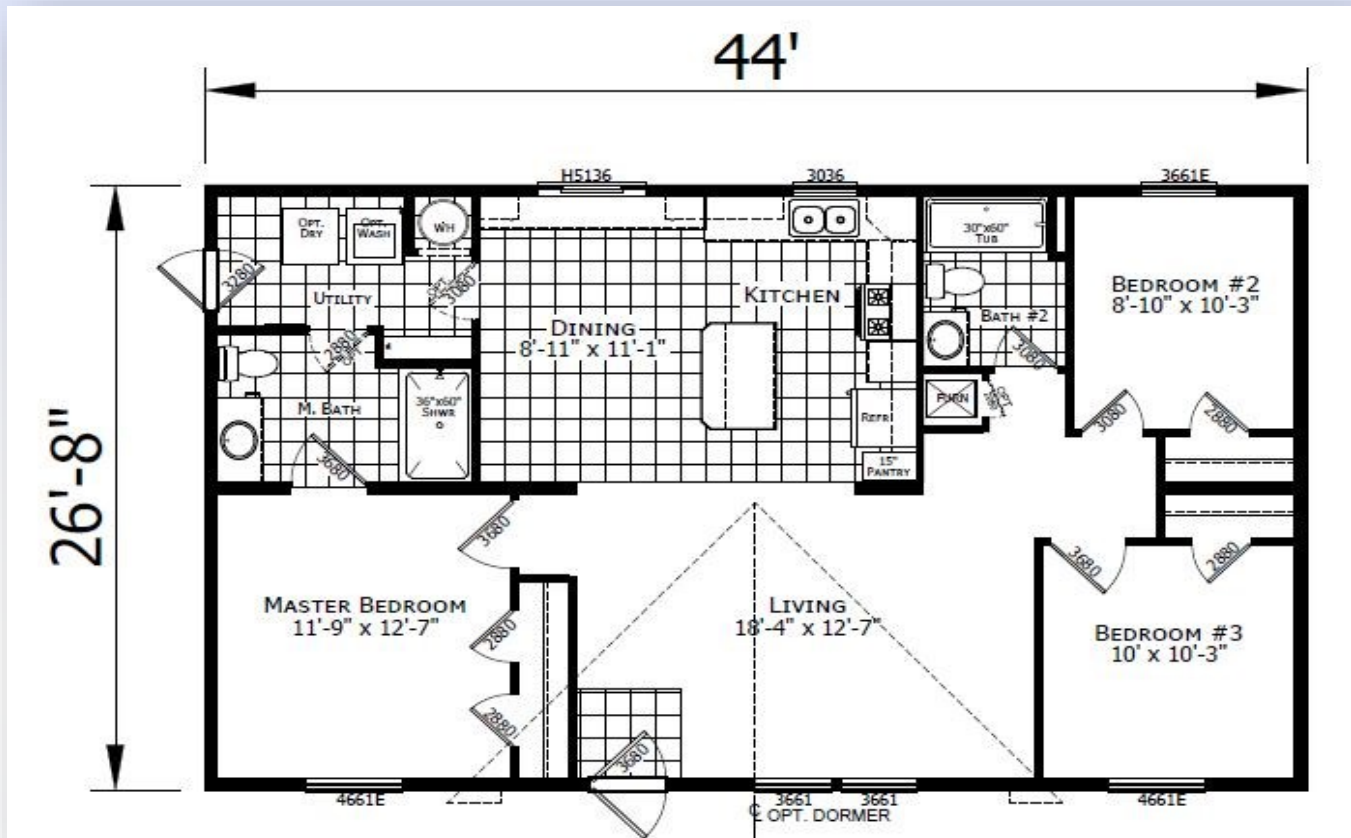


REDMAN 24402



*Model Pricing Subject to Change Without Notice Due to Market Volatility

\$145,060 AS SHOWN

\$145,060



ShowcaseHomesOfMaine.com

"Custom Modular Home Builder"

OPTIONS

BASE PRICE:

\$135,953

Options:

Maine Package: 40# Roof (16" O.C.), Ice Guard, Furnace Stack Extension, Furnace Safety Switch, Well Circuit Conduit, Smoke/CO Detectors, OSB Sheathing, Wind Wrap, Pier Savers	\$2,744
Champion 7 Year Limited Warranty: Covers major appliances, central A/C, central heating, plumbing, electrical, and structural (see sales consultant for details)	STD
Black Appliance Package (Fridge, Dishwasher, Microwave, Gas Range) *Please note that appliances may not be available at time of order due to widespread shortages; see your sales rep for details	\$899
Crescent Edge Countertops in Kitchen and Bathrooms	\$530
24' Reverse Gable Dormer	\$980
Upgrade Molding to 2.75" Throughout	\$395
R19 Wall Insulation (2"x6" Walls)	STD
R22 Floor Insulation	\$528
R30 Ceiling Insulation	\$220
Perimeter Heat	\$450
40 Gallon Elec Water Heater (30 Gallon STD)	\$79
Exterior Water Faucet	\$85
Water Shut-Off Valves at Each Fixture	\$75
Extra Lino @ Foyer	\$55
Upgrade Utility Room Door to 9-Lite	STD
Storm Doors @ Front Door and Utility Room	\$640
Furnace Door	\$130
Extra Doors - Master Bath to Utility Room	\$120
(2) Cable TV Jacks	\$98
(4) LED Recess Can Lights @ Kitchen	\$140
Ceiling Fan with Light Kit @ Living Room	\$255
(2) Pendant Lights @ Kitchen Island	\$130
Nickel Ceiling Lights @ Dining Room	\$40
LED Can Lights @ All Bedrooms	\$140
Porcelain Sinks @ Both Bathrooms	\$72
Single Lever Faucets Throughout	\$167
Tub Overdrape	\$55
Surface Mount Medicine Cab Over Master Bath Toilet	\$80
Options total	\$9,107

SELLING PRICE

\$145,060

Wind Zone II Add \$3,000



www.showcasehomesofmaine.com