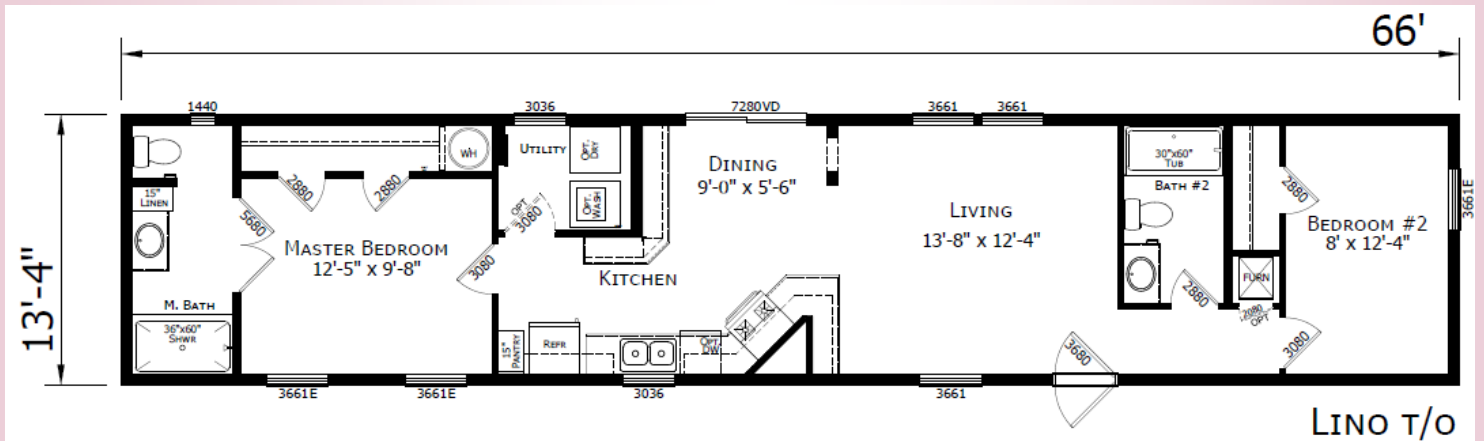


REDMAN 46627 PATIO DOOR



\$89,133 AS SHOWN



\$89,133



ShowcaseHomesOfMaine.com

"Custom Modular Home Builder"

OPTIONS

BASE PRICE

\$78,587.00

Options:

Maine Package: 40# Roof (16" O.C.), 7/16" OSB Sheathing, Ice Guard, Pier Savers, Furnace Stack Extension, Furnace Safety Switch, Well Pump Conduit, Combo Smoke/CO2 Detectors	\$3,957.00
Champion 7 Year Limited Warranty: Covers major appliances, central A/C, central heating, plumbing, electrical, and structural (see sales consultant for details)	STD
Upgraded Lighting Package	\$195.00
Crescent Countertop Edges	\$300.00
Glass Tile Backsplash @ Kitchen	\$600.00
Upgrade Molding to 2.75" Throughout	\$295.00
Cabinet Skirt Molding	\$114.00
R22 Floor Insulation	\$396.00
R19 Wall Insulation (2"x6" Walls)	STD
R30 Ceiling Insulation	\$198.00
Perimeter Heat	\$280.00
40 Gallon Elec Water Heater	\$79.00
Exterior Water Faucet	\$65.00
Water Shut-Off Valves Throughout	\$75.00
Lino Throughout	\$481.00
Black Kitchen Appliance Package (Fridge, D/W, Range, Microwave)	\$899.00
Sliding Glass Door IPO Std Rear Door	\$499.00
Storm Door (Installed)	\$290.00
Furnace Door	\$115.00
Extra 2 Panel Door @ Utility Rm	\$120.00
Add Window @ Utility Rm	\$65.00
Cable TV Jack	\$49.00
(4) LED Recess Cans @ Kitchen Ceiling	\$140.00
60" Shower w/ Glass Doors in Master Bath	\$295.00
Porcelain Vanity Sinks	\$72.00
Single Lever Faucets Throughout	\$167.00
Wood Cabinet Doors with Wood Stiles Throughout	\$800.00

Options total

\$10,546.00

Base plus Options

\$89,133.00

**Windzone II add \$1,500



ShowcaseHomesOfMaine.com

"Custom Modular Home Builder"

www.showcasehomesofmaine.com