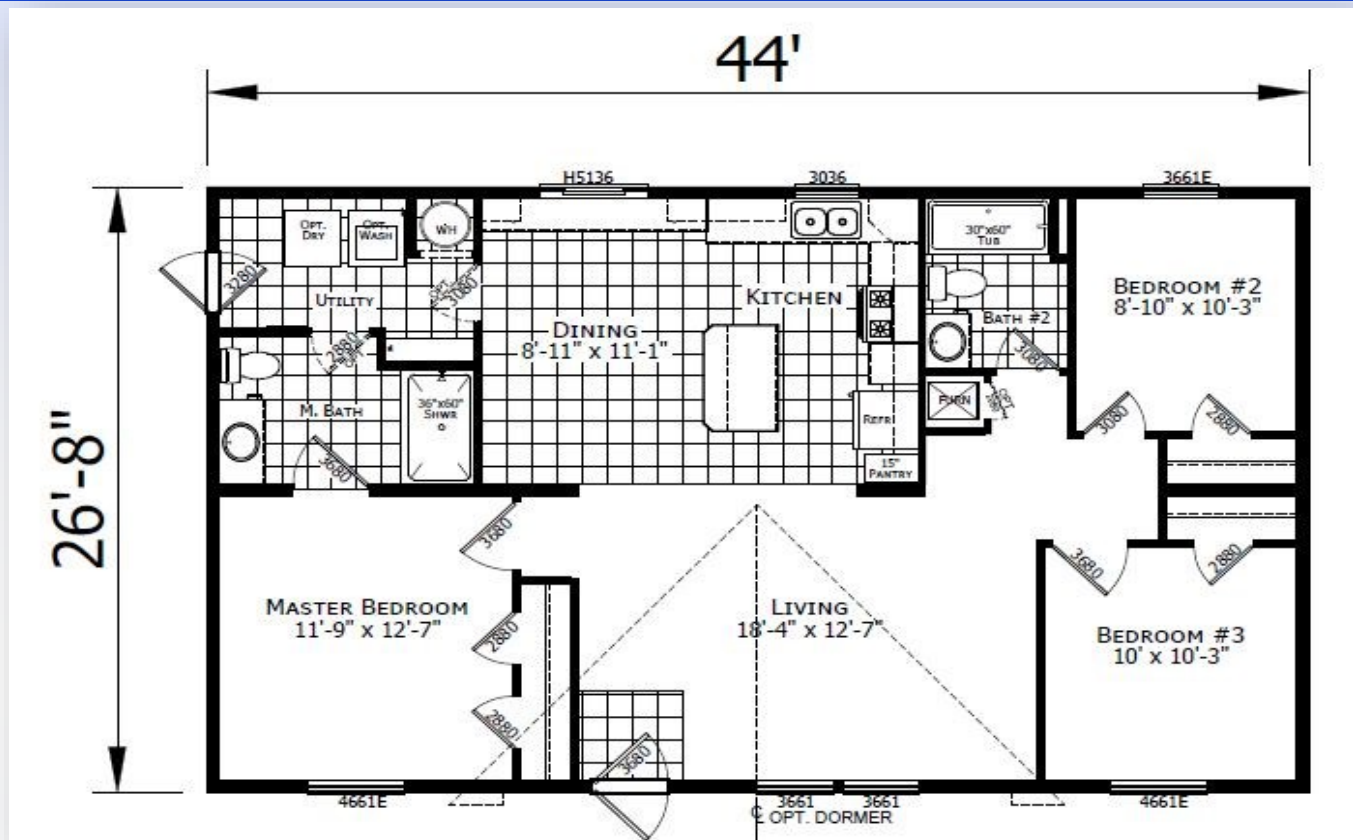


# REDMAN 24402



\*Model Pricing Subject to Change Without Notice Due to Market Volatility

**\$126,810 AS SHOWN**

# \$126,810



**ShowcaseHomesOfMaine.com**

**"Custom Modular Home Builder"**

# OPTIONS

**BASE PRICE:**

**\$116,422**

**Options:**

Maine Package: 40# Roof (16" O.C.), Ice Guard, Furnace Stack Extension, Furnace Safety Switch, Well Circuit Conduit, Smoke/CO Detectors, OSB Sheathing, Wind Wrap, Pier Savers	\$4,179
Champion 7 Year Limited Warranty: Covers major appliances, central A/C, central heating, plumbing, electrical, and structural (see sales consultant for details)	STD
Black Appliance Package (Fridge, Dishwasher, Microwave, Gas Range) *Please note that appliances may not be available at time of order due to widespread shortages; see your sales rep for details	\$899
Lighting Upgrade PKG	\$195
Crescent Edge Countertops in Kitchen and Bathrooms	\$530
24' Reverse Gable Dormer	\$980
Upgrade Molding to 2.75" Throughout	\$395
R19 Wall Insulation (2"x6" Walls)	STD
R22 Floor Insulation	\$484
R30 Ceiling Insulation	\$220
Perimeter Heat	\$450
40 Gallon Elec Water Heater (30 Gallon STD)	\$79
Exterior Water Faucet	\$65
Water Shut-Off Valves at Each Fixture	\$75
Extra Lino @ Foyer	\$55
Upgrade Utility Room Door to 9-Lite	STD
Storm Doors @ Front Door and Utility Room	\$580
Furnace Door	\$115
Extra Doors - Master Bath to Utility Room	\$120
(2) Cable TV Jacks	\$98
(4) LED Recess Can Lights @ Kitchen	\$140
Ceiling Fan with Light Kit @ Living Room	\$225
(2) Pendant Lights @ Kitchen Island	\$130
Porcelain Sinks @ Both Bathrooms	\$72
Single Lever Faucets Throughout	\$167
Tub Overdrape	\$55
Surface Mount Medicine Cab Over Master Bath Toilet	\$80
Options total	<u>\$10,388</u>

**SELLING PRICE**

**\$126,810**

\*\*\*Wind Zone II Add \$2,500\*\*\*



**ShowcaseHomesOfMaine.com**  
"Custom Modular Home Builder"

[www.showcasehomesofmaine.com](http://www.showcasehomesofmaine.com)