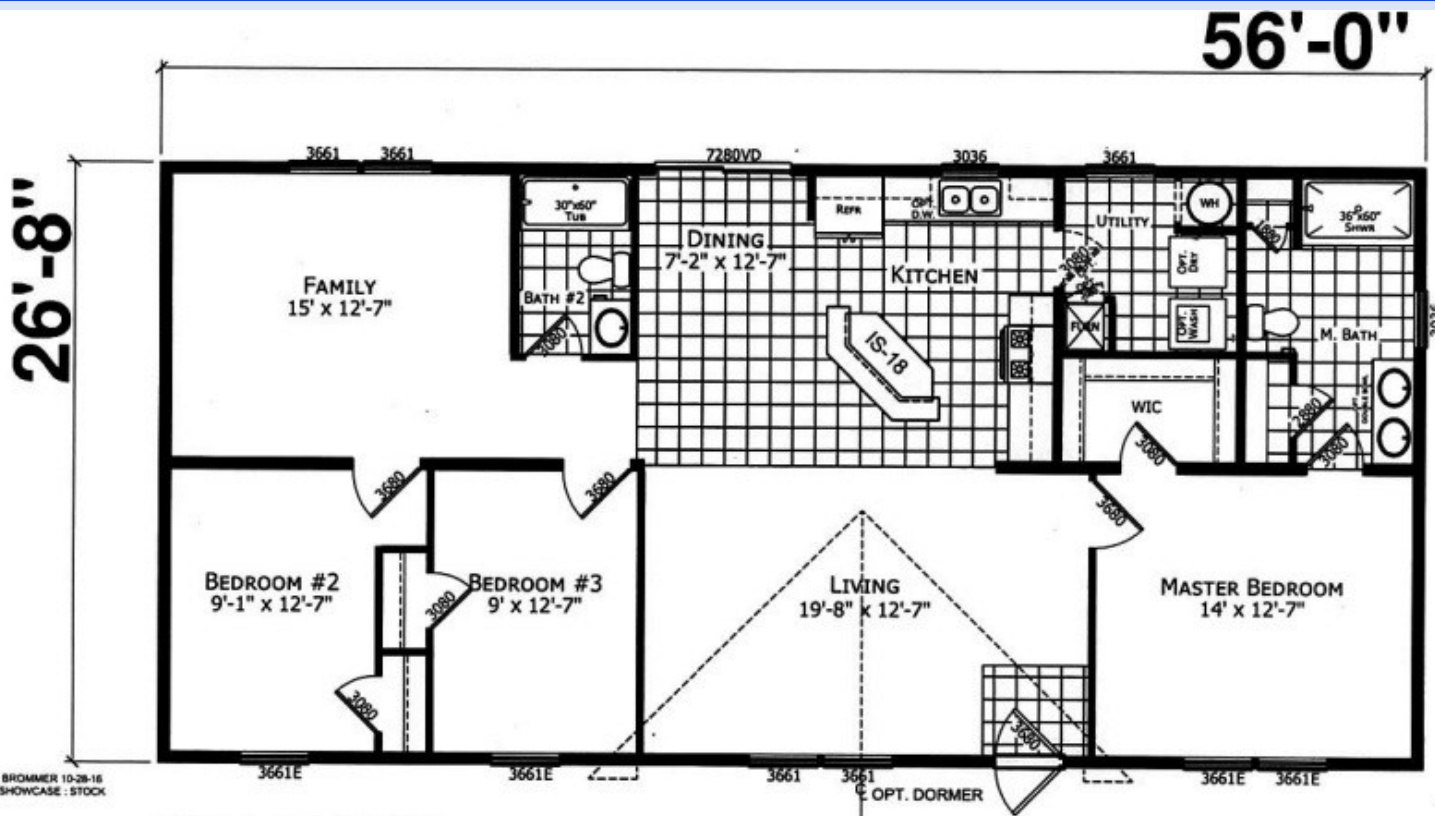


REDMAN 25601



*Model Pricing Subject to Change Without Notice Due to Market Volatility

\$132,220 AS SHOWN

\$132,220



ShowcaseHomesOfMaine.com

"Custom Modular Home Builder"

OPTIONS

BASE PRICE

\$116,887

Options:

Maine Package: 40# Roof (16" O.C.), Ox Board Red ThermoPly Sheathing, Ice Guard, Pier Savers, Furnace Safety Switch, Furnace Stack Extension, Extra Conduit for Well Circuit	\$6,039
Deluxe Black Gas Appliance Package: 22 cubic foot side-by-side fridge w/ ice & water, 5-cycle dishwasher, gas range, microwave over range	\$1,430
Champion 7 Year Limited Warranty: Covers major appliances, central A/C, central heating, plumbing, electrical, and structural (see sales rep for details)	STD
Upgraded Lighting Package	\$195
Upgraded Kitchen Countertop Finish - Cipollino Bianco	\$176
Glass Tile Backsplash @ Kitchen	\$250
Upgrade Molding to 2.75" Throughout	\$395
24' Dormer Over Front Door	\$925
Linen Closet in Master Bathroom	\$299
R22 Floor Insulation	\$616
R19 Wall Insulation (2"x6" Walls)	STD
R30 Roof Insulation	\$280
Upgraded 086 Gas Gun Furnace	\$485
Perimeter Heat	\$450
40 Gallon Elec Water Heater	\$79
Water Shut Off Valves @ Ea Fixture	\$75
Whole House Water Shut Off	STD
Extra Lino @ Front Entry	\$55
Front Storm Door, Factory Installed	\$265
Sliding Glass Door @ Dining Room	\$675
Furnace Door	\$90
Cable TV Jack (2)	\$98
4" Recess LED Can Lights (4)	\$140
Ceiling Fan/Light @ Living Room & Family Room	\$550
Stem Lights @ Kitchen Island (2)	\$100
60" Shower w/ Glass Doors @ Master Bathroom	\$225
Porcelain Lavatory Sink @ Hall Bath	\$36
Double Sink Vanity w/ Porcelain Sinks and Lights @ Master Bath	\$225
Single Lever Faucet w/ Pull Out Sprayer @ Kitchen	\$89
Upgrade to Single Lever Faucets in Bathrooms	\$117
Real Wood Cabinet Doors and Stiles Throughout	\$499
IS-18 Kitchen Island w/ Raised Bar Top	\$475
Options total	\$15,333
Base plus Options	\$132,220
SELLING PRICE	\$132,220

**Windzone II add \$2,000



ShowcaseHomesOfMaine.com

"Custom Modular Home Builder"

www.showcasehomesofmaine.com