

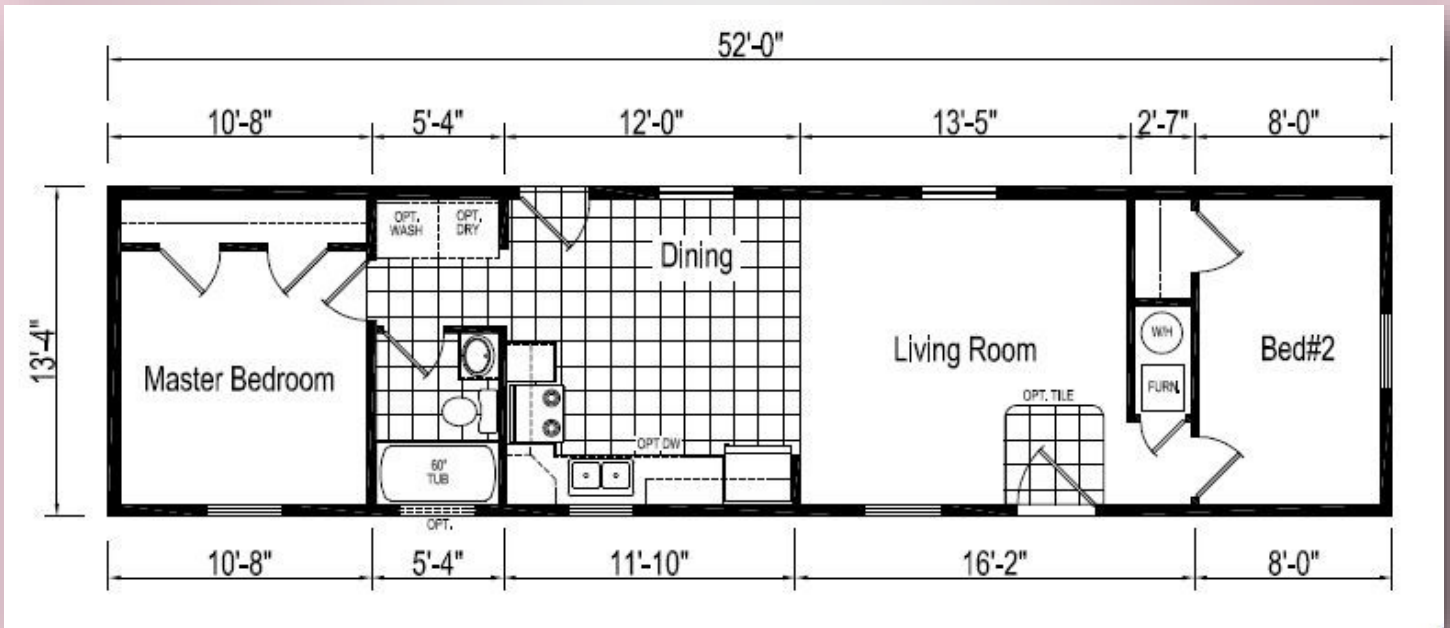
8097

EAGLE RIVER 56F478HS



EAGLE RIVER HOMES

718 Wilson St
Brewer, ME 04412
(207) 989-2337



*Model Pricing Subject to Change Without Notice
Due to Market Volatility

\$62,458 AS SHOWN

\$62,458



ShowcaseHomesOfMaine.com

"Custom Modular Home Builder"

OPTIONS

BASE PRICE

\$55,453.00

Options:

Maine Package: 40LB Roof (16" O.C.), OSB Sheathing, Ice Guard, Pier Savers, Wind Wrap, Furnace Stack Ext, NE Safety Switch, Well Circuit Conduit, Combo CO2 & Smoke Detectors.

| | |
|--|-------------|
| | \$3,831.00 |
| R-30 Roof Insulation | \$199.00 |
| R-22 Floor Insulation | \$235.00 |
| R-19 Wall Insulation (2"x6" Walls) | STD |
| Deluxe Georgia Pacific Siding "Shadow" | \$780.00 |
| Lino Throughout | \$299.00 |
| 18 Cubic Foot Fridge, Gas Range | STD |
| Dishwasher | \$425.00 |
| Storm Door @ Front Door | \$279.00 |
| Sliding Glass Door @ Dining Room | \$225.00 |
| 100 Amp Long Box Electrical Panel | \$60.00 |
| "Chalkboard" Panel Over Electrical Panel | \$69.00 |
| Ceiling Fan/Light @ Living Room | \$159.00 |
| (1) TV Jack @ Living Room | \$25.00 |
| Whole House Water Shut Off Valve | \$65.00 |
| Exterior Faucet | \$55.00 |
| 54" Shower IPO STD Tub/Shower | \$389.00 |
| Water Shut Offs @ Each Fixture | STD |
| Deep Well Stainless Steel Kitchen Sink | STD |
| Options total | \$7,095.00 |
| Base plus Options | \$62,458.00 |

SELLING PRICE

\$62,458.00

****Windzone II add \$1,000**



EAGLE RIVER HOMES



ShowcaseHomesOfMaine.com

"Custom Modular Home Builder"

www.showcasehomesofmaine.com