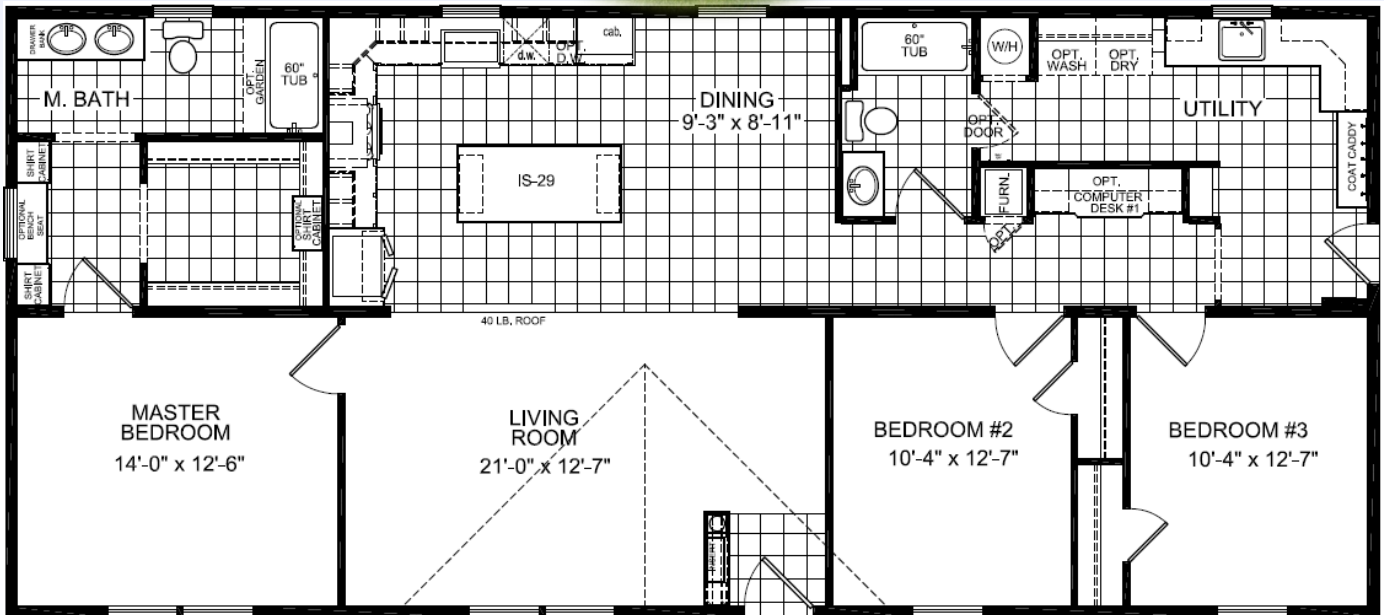


# REDMAN 46030 UK2



**\$102,995 AS SHOWN**

# \$102,995



**ShowcaseHomesOfMaine.com**

**"Custom Modular Home Builder"**

# OPTIONS

**BASE PRICE**

**90,624.00**

**Options:**

UK2 Ultimate Kitchen ***See Sales Consultant for Details***	4,799.00
UK2 Island	1,150.00
Maine Package: 40# Roof (16" OC), Ice Guard, Furnace Stack Extension, Furnace Safety Switch, Well Circuit Conduit, Smoke/CO Detectors, OSB Sheathing	1351.00
24' Dormer @ Front Door	625.00
40 Gal Water Heater IPO STD 30 Gal	79.00
Water Shutoff Valves @ Each Fixture	STD
Exterior Water Faucet	65.00
R30 Roof Insulation	STD
R22 Floor Insulation IPO STD R11	660.00
R19 Wall Insulation (2x6 Walls)	STD
Programmable Thermostat	STD
9 Lite Exterior Door Upgrade @ Utility Room	229.00
Exterior Storm Doors	530.00
Deluxe Computer Desk w/ Multimedia Jacks and Power Recept	640.00
Extra Door @ Utility Room & Water Heater	230.00
Bench Seat @ Utility Room Entrance	260.00
Metal Louvered Furnace Door	STD
Cable TV Jacks (2)	98.00
Chandelier IPO STD Surface Mount Light @ Dining Room	95.00
LED Recess Can Lights @ Kitchen (6)	210.00
Ceiling Fan @ Living Room	STD
Upgraded Surface Mount Lighting @ Master BR, Hall, Bed 2, Bed 3	75.00
Upgrade Kitchen Island to Massive Edge	50.00
1 PC Shower IPO STD Tub/Shower @ Master Bath	225.00
Elongated Toilets	STD
Wood Cabinet Doors and Stiles	STD

Options total

11,371.00

**SELLING PRICE**

**\$102,995.00**

\*\*\*Wind Zone II Add \$2,000



**ShowcaseHomesOfMaine.com**

**"Custom Modular Home Builder"**

[www.showcasehomesofmaine.com](http://www.showcasehomesofmaine.com)