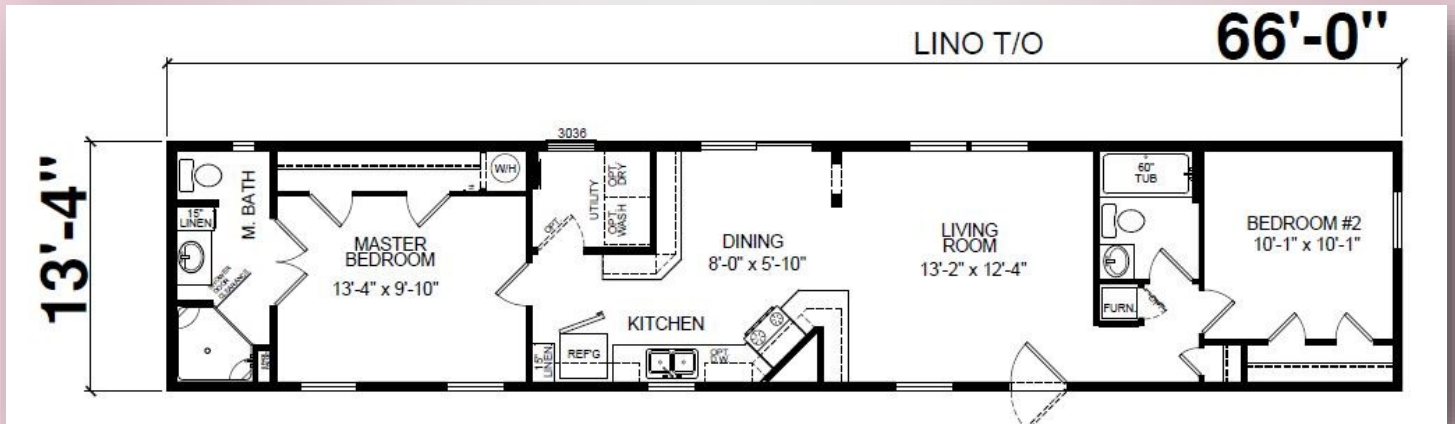


#5781

# REDMAN 46627 PATIO DOOR



**\$54,800 AS SHOWN**



**\$54,800**



**ShowcaseHomesOfMaine.com**

**"Custom Modular Home Builder"**

# OPTIONS

**BASE PRICE** **48,290**

**Options:**

Upgrade Chandelier & BR Ceiling Lights	195
Crescent Edge Counter Tops in Kitchen	300
6" Glass Tile Backsplash in Kitchen	360
7/16 OSB Sheathing	625
Ice Guard	212
Upgrade Molding PKG	295
Cabinet Skirt Molding	115
R-22 Floor Insulation	396
R-30 Roof Insulation	198
40 Gal Water Heater ILO STD 30 Gal	79
Furnace Stack Extension	31
Water Shut Offs Throughout	75
Exterior Water Faucet	65
Lino Throughout Whole House	370
Dishwasher Installed	425
Storm Door @ Front Door	265
Sliding Glass Door EXCHG Window	650
Furnace Door	75
Optional Door at Utility Room	85
New England Safety Switch	45
(2) Cable Jacks LR & Master BR	98
One Piece Tub EXCHG for STD	155
48 Corner Shower Upgrade	599
Porcelain Sinks at Both Baths	72
41" White Cabinet Upgrade	725
	<hr/>
Options total	6,510
Base plus Options	53,800

**SELLING PRICE** **54,800**

\*\*Windzone II add \$1,000



**ShowcaseHomesOfMaine.com**

**"Custom Modular Home Builder"**

[www.showcasehomesofmaine.com](http://www.showcasehomesofmaine.com)