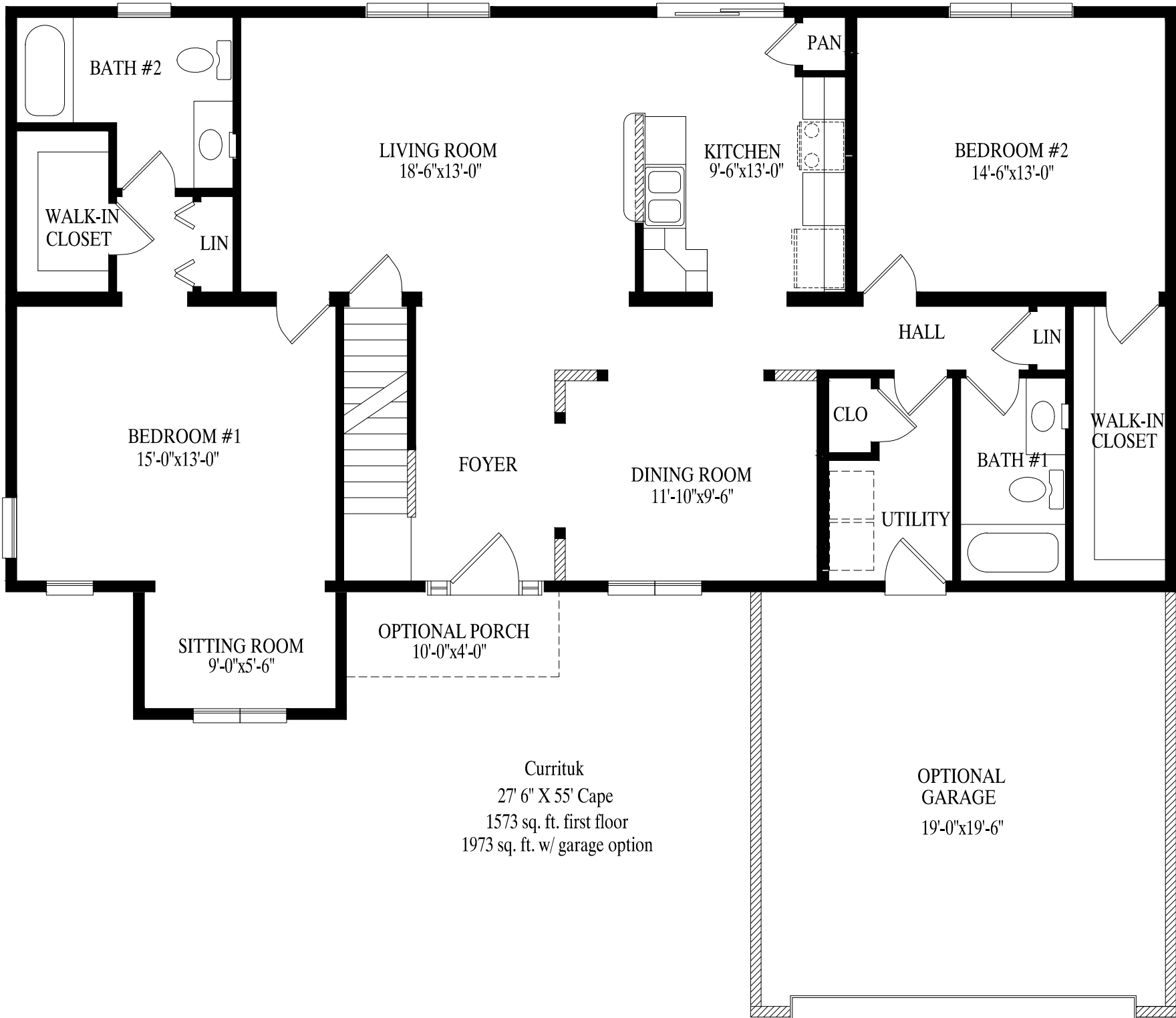


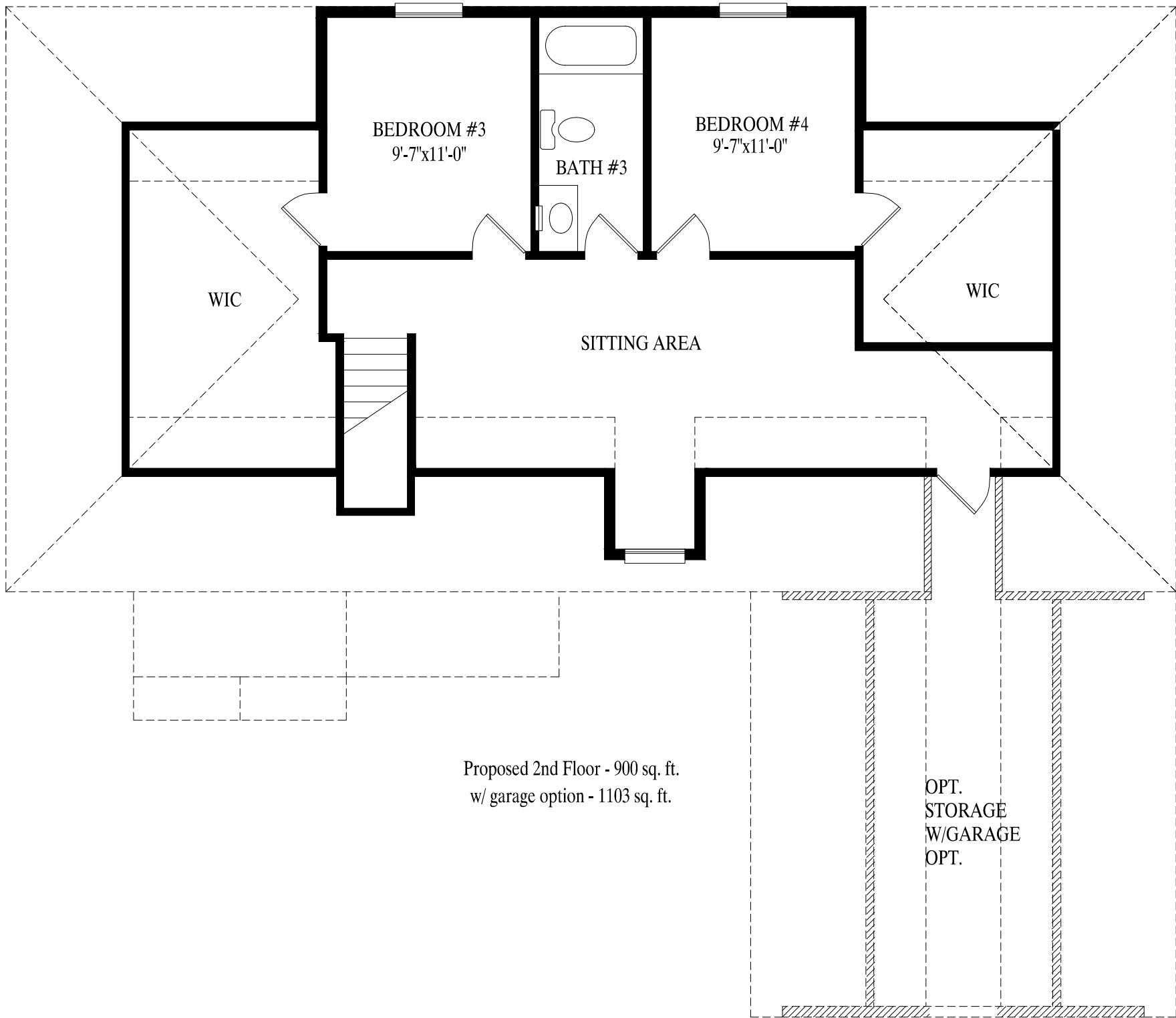
# *"The Curritik"*





Currituk  
 27' 6" X 55' Cape  
 1573 sq. ft. first floor  
 1973 sq. ft. w/ garage option

OPTIONAL  
 GARAGE  
 19'-0"x19'-6"



BEDROOM #3  
9'-7"x11'-0"

BEDROOM #4  
9'-7"x11'-0"

BATH #3

WIC

WIC

SITTING AREA

Proposed 2nd Floor - 900 sq. ft.  
w/ garage option - 1103 sq. ft.

OPT.  
STORAGE  
W/GARAGE  
OPT.